

Nitonakrętki



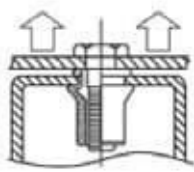
Nitonakrętki

Nitonakrętki Stal		Strona
FH-RB	Kołnierz płaski,	4
FH-RBC	Kołnierz płaski, szczelna	
RH-RB	Kołnierz zredukowany mini	5
RH-RBC	Kołnierz zredukowany mini, szczelna	
FH-KB	Kołnierz płaski, radełkowana	6
FH-KBC	Kołnierz płaski, radełkowana, szczelna	
RH-KB	Kołnierz zredukowany mini, radełkowana	7
RH-KBC	Kołnierz zredukowany mini, radełkowana, szczelna	
CH-RB	Kołnierz stożkowy	8
CH-KB	Kołnierz stożkowy, szczelna	
FH-SHB	Kołnierz płaski, sześciokątna na połowie	9
FH-SHBC	Kołnierz płaski, sześciokątna na połowie, szczelna	
FH-FHB	Kołnierz płaski, sześciokątna	10
FH-FHBC	Kołnierz płaski, sześciokątna, szczelna	
RH-FHB	Kołnierz zredukowany mini, sześciokątna	11
RH-FHBC	Kołnierz zredukowany mini, sześciokątna, szczelna	
RH-SHB	Kołnierz zredukowany mini, sześciokątna na połowie	12
RH-SHBC	Kołnierz zredukowany mini, sześciokątna na połowie, szczelna	

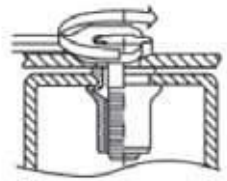
Nitonakrętki

Nitonakrętki stal nierdzewna A2		Strona
FH-RB/SS	Kołnierz płaski	
FH-RBC/SS	Kołnierz płaski, szczelna	13
<hr/>		
FH-KB/SS	Kołnierz płaski, radełkowana	
FH-KBC/SS	Kołnierz płaski, radełkowana, szczelna	14
<hr/>		
RH-RB/SS	Kołnierz zredukowany mini	
RH-RBC/SS	Kołnierz zredukowany mini, szczelna	15
<hr/>		
RH-KB/SS	Kołnierz zredukowany mini, radełkowana	16
RH-KBC/SS	Kołnierz zredukowany mini, radełkowana, szczelna	
<hr/>		
CH-RB/SS	Kołnierz stożkowy	17
CH-KB/SS	Kołnierz stożkowy, szczelna	
<hr/>		
RH-SHB/SS	Kołnierz zredukowany mini, sześciokątna na połowie	18
RH-SHBC/SS	Kołnierz zredukowany mini, sześciokątna na połowie, szczelna	
<hr/>		
FH-SHB/SS	Kołnierz płaski, sześciokątna na połowie	19
FH-SHBC/SS	Kołnierz płaski, sześciokątna na połowie, szczelna	

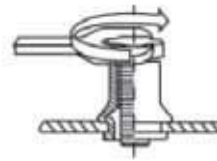
Nitonakrętki Aluminium		Strona
FH-RB/AL	Kołnierz płaski	20
FH-KB/AL	Kołnierz płaski, radełkowana	
<hr/>		
RH-RB/AL	Kołnierz zredukowany mini	21
RH-KB/AL	Kołnierz zredukowany mini, radełkowana	



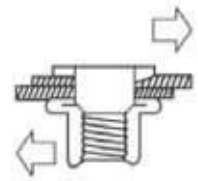
Wytrzymałość na wrywanie



Maksymalny moment dokręcenia



Siła dokręcania



Siła ścinania

Tabela 1: Siła wrywania

Jednostka: N

Nitonakrętka	Właściwości mechaniczne		M3	M4	M5	M6	M8	M10	M12
	Wrywanie	Stal/ Stal A2		3900	6800	11500	16500	25000	32000
Aluminium			1900	4000	6500	7800	12300	17500	...

Tabela 2: Siła dokręcania

Jednostka : Nm

Gwint	M3	M4	M5	M6	M8	M10	M12
Stal/Stal A2 · Kołnierz płaski	2	5	8.5	15	26	50	80
Stal/Stal A2 · Kołnierz stożkowy	1	4	8	15	26	45	70
Stal/Stal A2 · Kołnierz zredukowany mini	1	3	6	11	20	32	50
Aluminium · Kołnierz płaski / zredukowany mini	0.7	2.5	5	8	20	25	...

Tabela 3: Moment obrotowy siły dokręcania

Jednostka: Nm

Gwint	M3	M4	M5	M6	M8	M10	M12
Stal/Stal A2 · Kołnierz płaski	0.5	1	2	4.5	5.5	11	30
Stal/Stal A2 · Kołnierz stożkowy	0.4	0.8	1.5	3.5	4.5	8.5	24
Stal/Stal A2 · Kołnierz zredukowany mini	0.25	0.9	1.5	3.5	5	6.5	21
Aluminium · Kołnierz płaski / zredukowany mini	0.2	0.7	1.2	2.5	4	5	16

Tabela 4: Siła ścinania

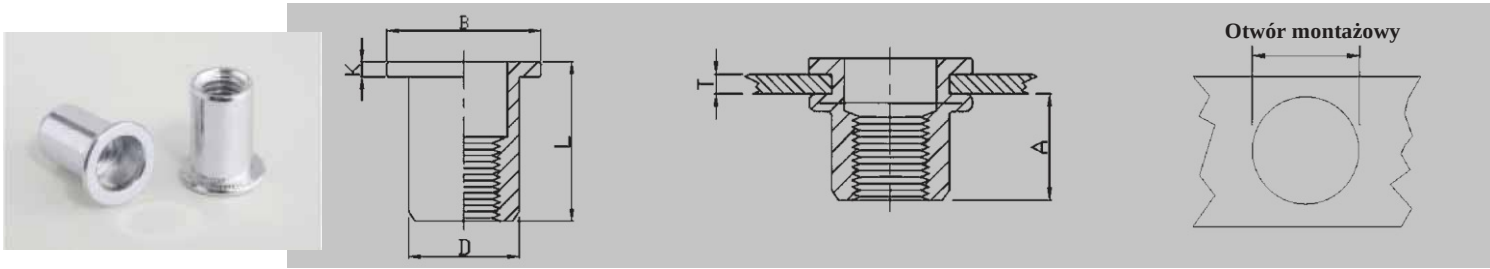
Jednostka : N

Nitonakrętka	Właściwości mechaniczne		M3	M4	M5	M6	M8	M10	M12
	Siła ścinania	Stal / Stal A2		900	1500	2000	3000	4400	5000
Aluminium			600	1000	1200	2000	2400	3800	...

Materiał: Stal (C 1008).

Stal nierdzewna A2 (ANSI304).

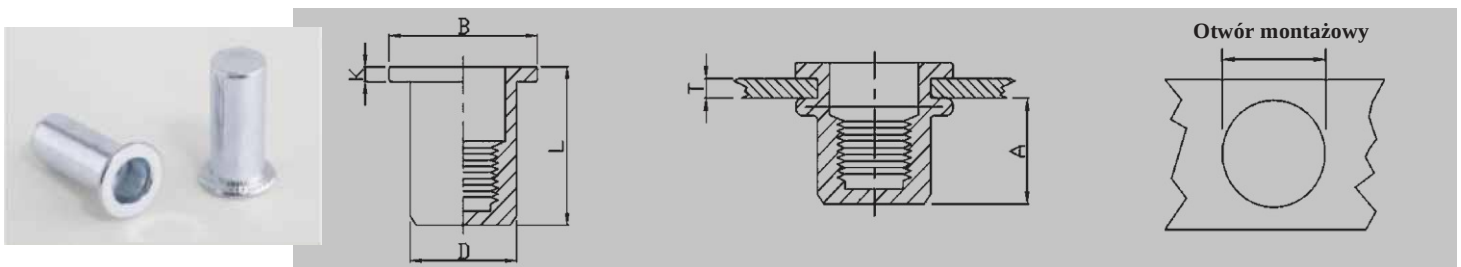
Aluminium (AlMg 2.5)



FH-RB

KOŁNIERZ PŁASKI, STAL Zi

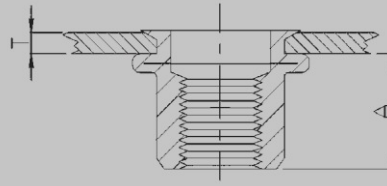
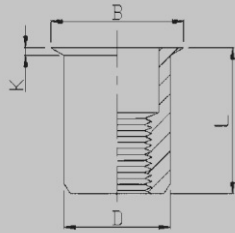
Gwint	Numer artykułu	Zakres Min - Max T [mm]	A Ref	Otwór montażowy + 0.1/ - 0 [mm]	D [mm]	B [mm]	K [mm]	L [mm]
M3 x 0.5	FH-RB-0315	0.5-1.5	4.7	5.0	4.9	7.2	0.8	8.5
M3 x 0.5	FH-RB-0325	1.5-2.5	4.7	5.0	4.9	7.2	0.8	9.5
M4 x 0.7	FH-RB-0420	0.5-2.0	6.0	6.0	5.9	8.5	0.8	10.5
M4 x 0.7	FH-RB-0435	2.0-3.5	6.0	6.0	5.9	8.5	0.8	12.0
M5 x 0.8	FH-RB-0525	0.5-2.5	7.5	7.0	6.9	10.0	1.0	13.0
M5 x 0.8	FH-RB-0550	2.5-5.0	8.5	7.0	6.9	10.0	1.0	17.0
M6 x 1.0	FH-RB-0630	0.5-3.0	9.2	9.0	8.9	12.3	1.3	15.5
M6 x 1.0	FH-RB-0655	3.0-5.5	9.2	9.0	8.9	12.3	1.3	18.0
M8 x 1.25	FH-RB-0835	0.5-3.5	11.5	11.0	10.9	15.0	1.5	18.5
M8 x 1.25	FH-RB-0860	3.5-6.0	11.5	11.0	10.9	15.0	1.5	21.0
M10 x 1.5	FH-RB-1025	0.5-2.5	11.5	13.0	12.9	16.3	1.6	17.0
M10 x 1.5	FH-RB-1040	2.5-4.0	12.5	13.0	12.9	17.0	1.6	21.0
M12 x 1.75	FH-RB-1240	1.0-4.0	13.5	15.0	14.9	18.0	1.7	22.0
M12 x 1.75	FH-RB-1265	4.0-6.5	13.5	15.0	14.9	18.0	1.7	25.0
M10 x 1.5	FH-RB-1035 (13H)	1.0-3.5	11.0	12.0	11.9	16.0	1.5	19.0
M12 x 1.75	FH-RB-1240 (16H)	1.0-4.0	16.0	16.0	15.9	22.0	2.0	25.0



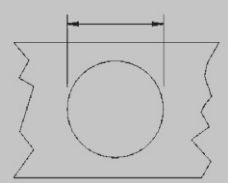
FH-RBC

KOŁNIERZ PŁASKI, SZCZELNA, STAL Zi

Gwint	Numer artykułu	Zakres Min - Max T [mm]	A Ref	Otwór montażowy + 0.1/ - 0 [mm]	D [mm]	B [mm]	K [mm]	L [mm]
M4 x 0.7	FH-RBC-0420	0.5-2.0	11.3	6.0	5.9	9.0	0.8	16.0
M4 x 0.7	FH-RBC-0440	2.0-4.0	11.3	6.0	5.9	9.0	0.8	18.0
M5 x 0.8	FH-RBC-0525	0.5-2.5	11.5	7.0	6.9	10.0	1.0	17.0
M5 x 0.8	FH-RBC-0550	3.0-5.0	11.5	7.0	6.9	10.0	1.0	19.0
M6 x 1.0	FH-RBC-0630	0.5-3.0	12.7	9.0	8.9	12.3	1.3	19.0
M6 x 1.0	FH-RBC-0650	3.0-5.0	12.7	9.0	8.9	12.3	1.3	21.0
M8 x 1.25	FH-RBC-0830	0.5-3.0	14.8	11.0	10.9	15.0	1.5	21.5
M8 x 1.25	FH-RBC-0855	3.0-5.5	14.8	11.0	10.9	15.0	1.5	24.0
M10 x 1.5	FH-RBC-1040	1.0-4.0	19.2	13.0	12.9	17.0	1.6	27.0



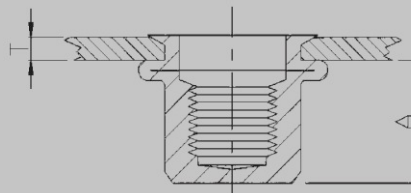
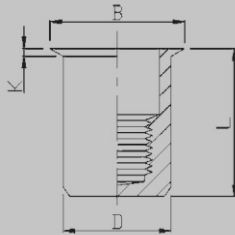
Otwór montażowy



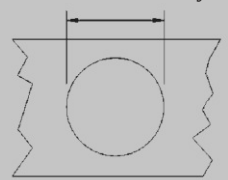
RH-RB

KOŁNIERZ ZREDUKOWANY MINI, STAL Zi

Gwint	Numer artykułu	Zakres Min - Max T [mm]	A Ref	Otwór montażowy + 0.1 / - 0 [mm]	D [mm]	B [mm]	K [mm]	L [mm]
M3 x 0.5	RH-RB-0315	0.5-1.5	6.2	5.0	4.9	6.0	0.5	9.0
M4 x 0.7	RH-RB-0420	0.5-2.0	6.5	6.0	5.9	7.0	0.5	10.5
M4 x 0.7	RH-RB-0440	2.0-4.0	6.5	6.0	5.9	7.0	0.5	13.0
M5 x 0.8	RH-RB-0520	0.5-2.0	7.0	7.0	6.9	8.0	0.5	11.5
M5 x 0.8	RH-RB-0540	2.0-4.0	7.0	7.0	6.9	8.0	0.5	13.0
M6 x 1.0	RH-RB-0625	0.5-2.5	8.5	9.0	8.9	10.0	0.6	14.0
M6 x 1.0	RH-RB-0650	2.5-5.0	8.5	9.0	8.9	10.0	0.6	17.0
M8 x 1.25	RH-RB-0830	0.5-3.0	10.0	11.0	10.9	12.0	0.6	16.5
M8 x 1.25	RH-RB-0850	3.0-5.0	10.0	11.0	10.9	12.0	0.6	18.5
M10 x 1.5	RH-RB-1030	0.5-3.0	13.0	13.0	12.9	14.0	0.7	17.7
M10 x 1.5	RH-RB-1055	3.0-5.5	13.0	13.0	12.9	14.0	0.7	21.0



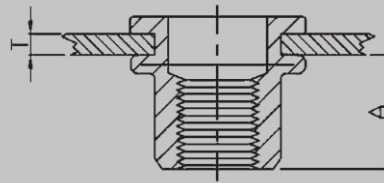
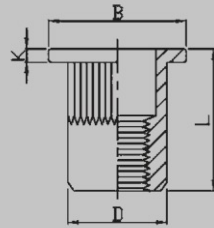
Otwór montażowy



RH-RBC

KOŁNIERZ ZREDUKOWANY MINI, SZCZELNA, STAL Zi

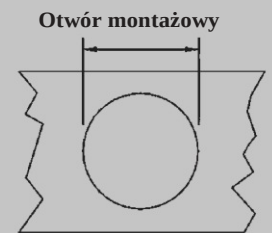
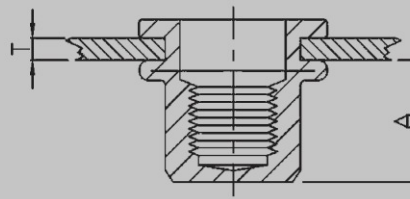
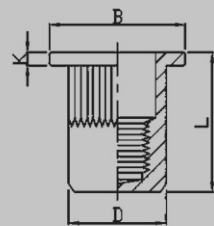
Gwint	Numer artykułu	Zakres Min - Max T [mm]	A Ref	Otwór montażowy + 0.1 / - 0 [mm]	D [mm]	B [mm]	K [mm]	L [mm]
M4 x 0.7	RH-RBC-0420	0.5-2.0	11.0	6.0	5.9	7.0	0.5	15.0
M4 x 0.7	RH-RBC-0430	2.0-3.0	11.0	6.0	5.9	7.0	0.5	16.0
M5 x 0.8	RH-RBC-0520	0.5-2.0	12.5	7.0	6.9	8.0	0.5	16.5
M5 x 0.8	RH-RBC-0535	2.0-3.5	12.5	7.0	6.9	8.0	0.5	17.5
M6 x 1.0	RH-RBC-0630	0.5-3.0	15.5	9.0	8.9	10.0	0.6	20.5
M6 x 1.0	RH-RBC-0645	3.0-4.5	15.5	9.0	8.9	10.0	0.6	22.0
M8 x 1.25	RH-RBC-0830	1.0-3.0	17.0	11.0	10.9	12.0	0.6	23.0
M8 x 1.25	RH-RBC-0845	3.0-4.5	17.0	11.0	10.9	12.0	0.6	24.5
M10 x 1.5	RH-RBC-1030	1.0-3.0	18.2	13.0	12.9	14.0	0.7	24.5
M10 x 1.5	RH-RBC-1050	3.0-5.0	18.2	13.0	12.9	14.0	0.7	26.0



FH-KB

KOŁNIERZ PŁASKI, RADEŁKOWANA, STAL Zi

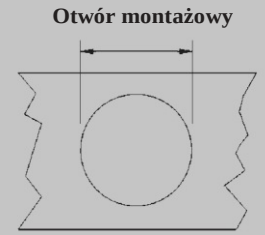
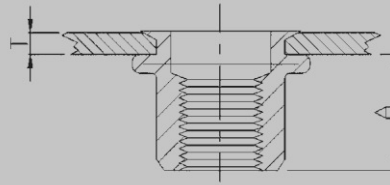
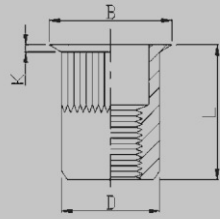
Gwint	Numer artykułu	Zakre Min - Max T [mm]	A Ref	Otwór montażowy + 0.1 / -0 [mm]	D [mm]	B [mm]	K [mm]	L [mm]
M3 x 0.5	FH-KB-0315	0.5-1.5	6.0	5.0	4.9	8.0	0.8	10.0
M4 x 0.7	FH-KB-0420	0.5-2.0	6.0	6.0	5.9	9.0	0.8	10.5
M4 x 0.7	FH-KB-0435	2.0-3.5	6.0	6.0	5.9	9.0	0.8	12.0
M5 x 0.8	FH-KB-0525	0.5-2.5	7.5	7.0	6.9	10.0	1.0	13.0
M5 x 0.8	FH-KB-0550	2.5-5.0	8.5	7.0	6.9	10.0	1.0	16.5
M6 x 1.0	FH-KB-0630	0.5-3.0	9.2	9.0	8.9	12.3	1.3	15.5
M6 x 1.0	FH-KB-0655	3.0-5.5	10.5	9.0	8.9	12.3	1.3	19.5
M8 x 1.25	FH-KB-0835	1.0-3.5	11.5	11.0	10.9	14.5	1.5	18.5
M8 x 1.25	FH-KB-0860	3.5-6.0	11.5	11.0	10.9	14.5	1.5	21.0
M10 x 1.5	FH-KB-1040	1.0-4.0	13.5	13.0	12.9	17.0	1.7	21.5
M10 x 1.5	FH-KB-1065	4.0-6.5	13.5	13.0	12.9	17.0	1.7	24.0
M12 x 1.75	FH-KB-1240	1.0-4.0	13.5	15.0	14.9	18.0	1.7	22.0
M12 x 1.75	FH-KB-1265	4.0-6.5	14.0	15.0	14.9	18.0	1.7	25.0
M10 x 1.5	FH-KB-1035 (13H)	1.0-3.5	11.0	12.0	11.9	16.0	1.6	19.0
M12 x 1.75	FH-KB-1240 (16H)	1.0-4.0	15.0	16.0	15.9	22.0	2.0	25.0



FH-KBC

KOŁNIERZ PŁASKI, RADEŁKOWANA, SZCZELNA, STAL Zi

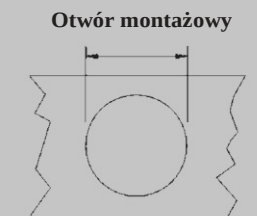
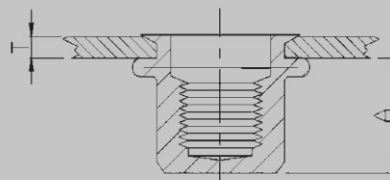
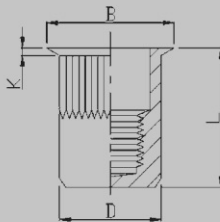
Gwint	Numer artykułu	Zakres Min - Max T [mm]	A Ref	Otwór montażowy + 0.1 / -0 [mm]	D [mm]	B [mm]	K [mm]	L [mm]
M4 x 0.7	FH-KBC-0420	0.5-2.0	11.3	6.0	5.9	9.0	0.8	16.0
M4 x 0.7	FH-KBC-0440	2.0-4.0	11.3	6.0	5.9	9.0	0.8	18.0
M5 x 0.8	FH-KBC-0530	0.5-3.0	11.5	7.0	6.9	10.0	1.0	17.0
M5 x 0.8	FH-KBC-0550	3.0-5.0	11.5	7.0	6.9	10.0	1.0	19.0
M6 x 1.0	FH-KBC-0630	0.5-3.0	12.7	9.0	8.9	12.3	1.3	19.2
M6 x 1.0	FH-KBC-0650	3.0-5.0	12.7	9.0	8.9	12.3	1.3	21.0
M8 x 1.25	FH-KBC-0830	0.5-3.0	14.8	11.0	10.9	15.0	1.5	21.5
M8 x 1.25	FH-KBC-0855	3.0-5.5	14.8	11.0	10.9	15.0	1.5	24.0
M10 x 1.5	FH-KBC-1040	1.0-4.0	19.2	13.0	12.9	17.0	1.6	27.0



RH-KB

KOŁNIERZ ZREDUKOWANY MINI, RADEŁKOWANA, STAL Zi

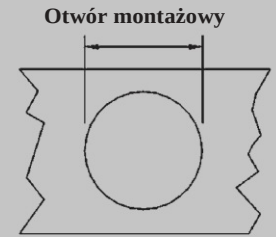
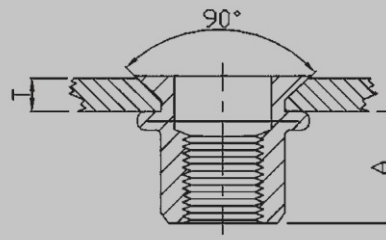
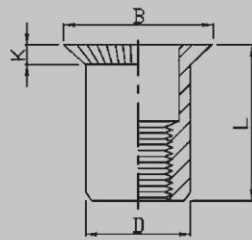
Gwint	Numer artykułu	Zakres Min - Max T [mm]	A Ref	Otwór montażowy + 0.1 /- 0 [mm]	D [mm]	B [mm]	K [mm]	L [mm]
M3 x 0.5	RH-KB-0320	0.5-2.0	6.2	5.0	4.9	6.0	0.5	9.0
M4 x 0.7	RH-KB-0420	0.5-2.0	7.0	6.0	5.9	7.0	0.5	11.2
M4 x 0.7	RH-KB-0440	2.0-4.0	7.0	6.0	5.9	7.0	0.5	13.0
M5 x 0.8	RH-KB-0520	0.5-2.0	7.0	7.0	6.9	8.0	0.5	11.5
M5 x 0.8	RH-KB-0540	2.0-4.0	7.0	7.0	6.9	8.0	0.5	13.0
M6 x 1.0	RH-KB-0625	0.5-2.5	8.5	9.0	8.9	10.0	0.6	14.0
M6 x 1.0	RH-KB-0650	2.5-5.0	8.5	9.0	8.9	10.0	0.6	16.0
M8 x 1.25	RH-KB-0830	0.5-3.0	10.0	11.0	10.9	12.0	0.65	16.5
M8 x 1.25	RH-KB-0850	3.0-5.0	10.0	11.0	10.9	12.0	0.65	18.5
M10 x 1.5	RH-KB-1035	1.0-3.5	12.5	13.0	12.9	14.0	0.7	19.5
M10 x 1.5	RH-KB-1060	3.5-6.0	12.5	13.0	12.9	14.0	0.7	22.0
M10 x 1.5	RH-KB-1035 (13H)	1.0-3.5	12.5	12.0	11.9	13.0	0.7	19.5
M12 x 1.75	RH-KB-1240 (16H)	1.0-4.0	16.2	16.0	15.9	17.6	0.75	24.2



RH-KBC

KOŁNIERZ ZREDUKOWANY MINI, RADEŁKOWANA, SZCZELNA, STALOWA Zi

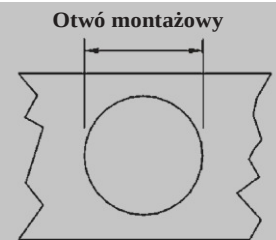
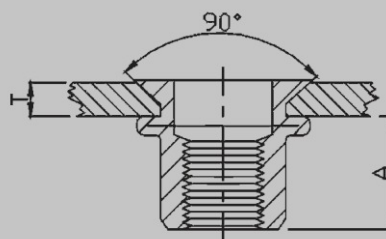
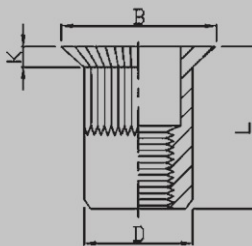
Gwint	Numer artykułu	Zakres Min - Max T [mm]	A Ref	Otwór montażowy + 0.1 /- 0 [mm]	D [mm]	B [mm]	K [mm]	L [mm]
M4 x 0.7	RH-KBC-0420	0.5-2.0	11.0	6.0	5.9	7.0	0.5	15.0
M4 x 0.7	RH-KBC-0435	2.0-3.5	11.0	6.0	5.9	7.0	0.5	16.5
M5 x 0.8	RH-KBC-0520	0.5-2.0	12.5	7.0	6.9	8.0	0.5	16.5
M5 x 0.8	RH-KBC-0535	2.0-3.5	12.5	7.0	6.9	8.0	0.5	18.0
M6 x 1.0	RH-KBC-0630	0.5-3.0	15.5	9.0	8.9	10.0	0.6	20.5
M6 x 1.0	RH-KBC-0645	3.0-4.5	15.5	9.0	8.9	10.0	0.6	22.0
M8 x 1.25	RH-KBC-0830	0.5-3.0	17.0	11.0	10.9	12.0	0.65	23.0
M8 x 1.25	RH-KBC-0845	3.0-4.5	17.0	11.0	10.9	12.0	0.65	24.5
M10 x 1.5	RH-KBC-1030	1.0-3.0	18.2	13.0	12.9	14.0	0.7	24.5
M10 x 1.5	RH-KBC-1050	3.0-5.0	18.2	13.0	12.9	14.0	0.7	26.0



CH-RB

KOŁNIERZ STOŻKOWY, STAL Zi

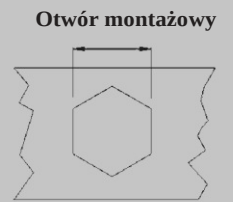
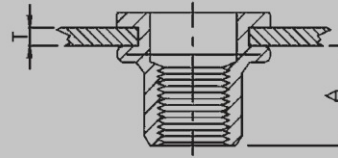
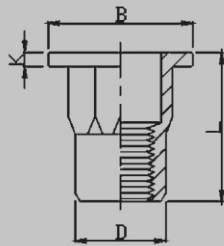
Gwint	Numer artykułu	Zakres Min - Max T [mm]	A Ref	Otwór montażowy + 0.1 / - 0 [mm]	D [mm]	B [mm]	K [mm]	L [mm]
M4 x 0.7	CH-RB-0430	1.5-3.0	6.5	6.0	5.9	9.0	1.5	12.0
M5 x 0.8	CH-RB-0535	1.5-3.5	7.5	7.0	6.9	10.0	1.5	13.0
M6 x 1.0	CH-RB-0640	1.5-4.0	9.0	9.0	8.9	12.0	1.5	15.5
M8 x 1.25	CH-RB-0845	2.0-4.5	11.0	11.0	10.9	14.0	1.5	18.5
M10 x 1.5	CH-RB-1050	2.0-5.0	13.0	13.0	12.9	16.0	1.5	21.0



CH-KB

KOŁNIERZ STOŻKOWY, RADEŁKOWANA, STAL Zi

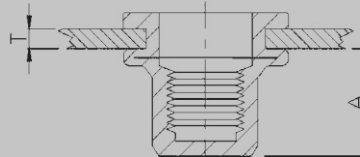
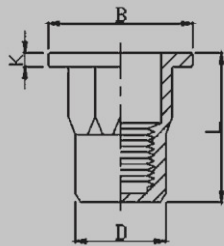
Gwint	Numer artykułu	Zakres Min - Max T [mm]	A Ref	Otwór montażowy + 0.1 / - 0 [mm]	D [mm]	B [mm]	K [mm]	L [mm]
M4 x 0.7	CH-KB-0430	1.5-3.0	6.5	6.0	5.9	9.0	1.5	12.0
M5 x 0.8	CH-KB-0535	1.5-3.5	7.5	7.0	6.9	10.0	1.5	13.0
M6 x 1.0	CH-KB-0640	1.5-4.0	9.0	9.0	8.9	12.0	1.5	15.5
M8 x 1.25	CH-KB-0845	2.0-4.5	11.0	11.0	10.9	14.0	1.5	18.5
M10 x 1.5	CH-KB-1050	2.0-5.0	13.0	13.0	12.9	16.0	1.5	21.0
M12 x 1.75	CH-KB-1250(16H)	2.0-5.0	16.5	16.0	15.9	19.0	1.5	24.0



FH-SHB

KOŁNIERZ PŁASKI, SZEŚCIOKĄTNA NA POŁOWIE, STAL Zi

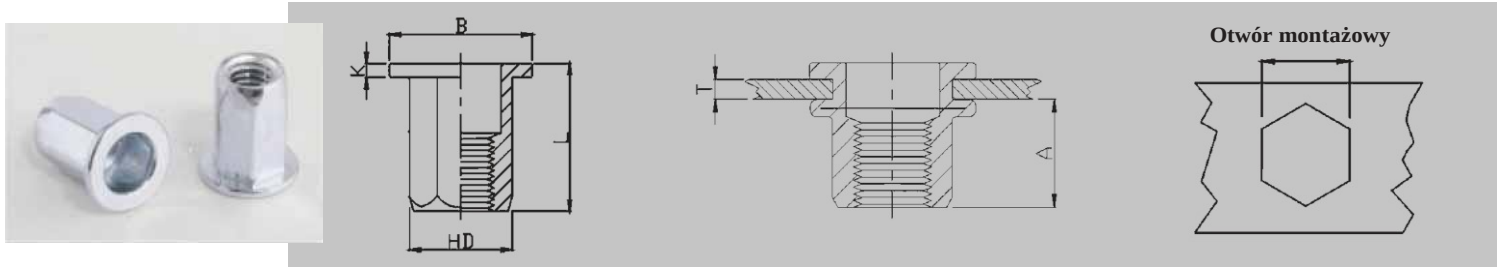
Gwint	Numer artykułu	Zakres Min - Max T [mm]	A Ref	Otwór montażowy + 0.1 /-0 [mm]	D [mm]	B [mm]	K [mm]	L [mm]
M4 x 0.7	FH-SHB-0420	0.5-2.0	6.5	6.0	5.9	9.0	0.8	11.0
M5 x 0.8	FH-SHB-0525	0.5-2.5	8.0	7.0	6.9	10.0	1.0	13.0
M6 x 1.0	FH-SHB-0630	0.5-3.0	8.5	9.0	8.9	12.7	1.35	15.0
M8 x 1.25	FH-SHB-0835	1.0-3.5	10.5	11.0	10.9	16.0	1.5	18.0
M10 x 1.5	FH-SHB-1035	1.0-3.5	12.5	13.0	12.9	18.0	1.7	21.0
M12 x 1.75	FH-SHB-1240	1.0-4.0	14.0	15.0	14.9	20.0	1.7	23.0
M10 x 1.5	FH-SHB-1035(12H)	1.0-3.5	11.0	12.0	11.9	17.0	1.6	19.0
M12 x 1.75	FH-SHB-1250(16H)	2.0-5.0	16.5	16.0	15.9	23.0	2.2	27.5



FH-SHBC

KOŁNIERZ PŁASKI, SZEŚCIOKĄTNA NA POŁOWIE, SZCZELNA, STAL Zi

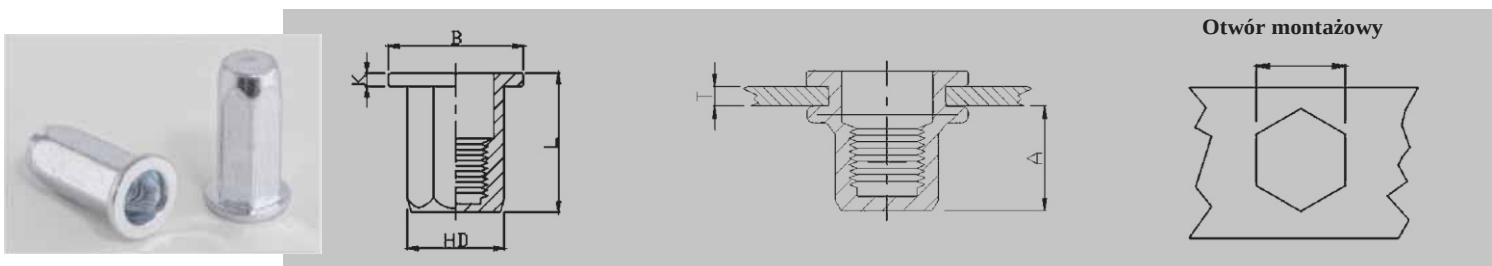
Gwint	Numer artykułu	Zakres Min - Max T [mm]	A Ref	Otwór montażowy + 0.1 /-0 [mm]	D [mm]	B [mm]	K [mm]	L [mm]
M4 x 0.7	FH-SHBC-0420	0.5-2.0	11.0	6.0	5.9	9.0	0.8	15.0
M5 x 0.8	FH-SHBC-0525	0.5-2.5	13.5	7.0	6.9	10.0	1.0	18.0
M6 x 1.0	FH-SHBC-0630	0.5-3.0	17.0	9.0	8.9	12.0	1.3	23.0
M8 x 1.25	FH-SHBC-0835	1.0-3.5	19.0	11.0	10.9	16.0	1.5	26.0
M10 x 1.5	FH-SHBC-1040	1.0-4.0	25.0	13.0	12.9	19.0	1.7	33.0



FH-FHB

KOŁNIERZ PŁASKI, SZEŚCIOKĄTNA, STAL Zi

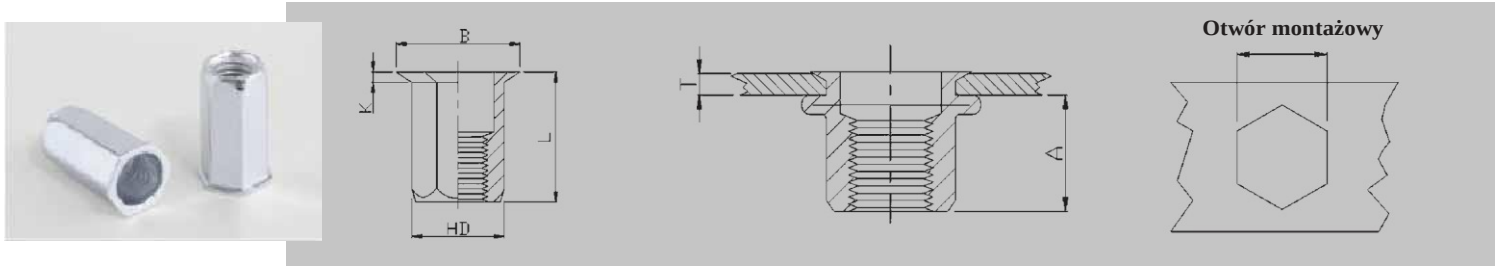
Gwint	Numer artykułu	Zakres Min - Max T [mm]	A Ref	Otwór montażowy		D [mm]	B [mm]	K [mm]	L [mm]
				+ 0.1 / - 0 [mm]					
M4 x 0.7	FH-FHB-0420	0.5-2.0	6.5	6.0	5.9	9.0	0.8	11.0	
M5 x 0.8	FH-FHB-0525	0.5-2.5	8.0	7.0	6.9	10.0	1.0	14.0	
M6 x 1.0	FH-FHB-0630	0.5-3.0	8.5	9.0	8.9	12.7	1.35	15.0	
M8 x 1.25	FH-FHB-0835	1.0-3.5	10.5	11.0	10.9	16.0	1.5	18.0	
M10 x 1.5	FH-FHB-1035	1.0-3.5	12.5	13.0	12.9	18.0	1.7	21.0	
M12 x 1.75	FH-FHB-1240	1.0-4.0	14.0	15.0	14.9	20.0	1.7	23.0	
M10 x 1.5	FH-FHB-1035 (13H)	1.0-3.5	13.5	12.0	11.9	18.0	1.7	21.0	
M12 x 1.75	FH-FHB-1250 (16H)	2.0-5.0	16.5	16.0	15.9	23.0	2.0	27.0	



FH-FHBC

KOŁNIERZ PŁASKI, SZEŚCIOKĄTNA, SZCZELNA, STAL Zi

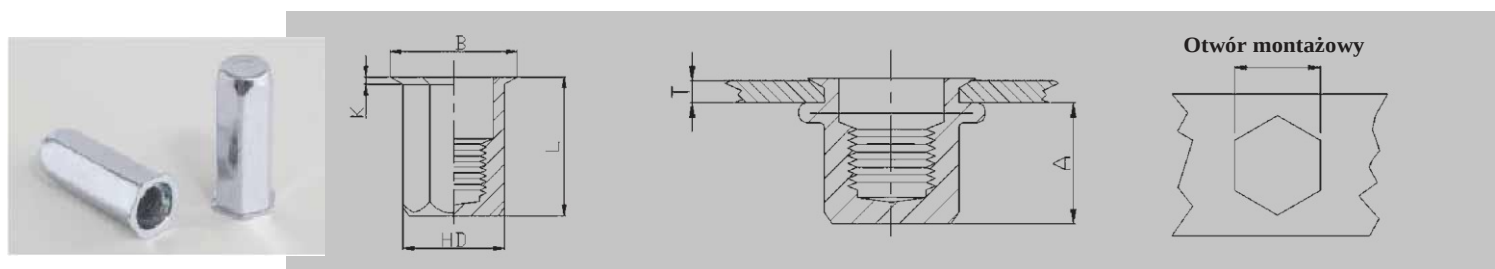
Gwint	Numer artykułu	Zakres Min - Max T [mm]	A Ref	Otwór montażowy		D [mm]	B [mm]	K [mm]	L [mm]
				+ 0.1 / - 0 [mm]					
M4 x 0.7	FH-FHBC-0420	0.5-2.0	11.0	6.0	5.9	9.0	1.0	15.0	
M5 x 0.8	FH-FHBC-0525	0.5-2.5	13.5	7.0	6.9	10.0	1.0	18.0	
M6 x 1.0	FH-FHBC-0630	0.5-3.0	17.0	9.0	8.9	12.7	1.5	23.0	
M8 x 1.25	FH-FHBC-0835	1.0-3.5	19.0	11.0	10.9	16.0	1.5	26.0	
M10 x 1.5	FH-FHBC-1040	1.0-4.0	25.0	13.0	12.9	19.0	2.0	33.0	



RH-FHB

KOŁNIERZ ZREDUKOWANY MINI, SZEŚCIOKĄTNA, STAL Zi

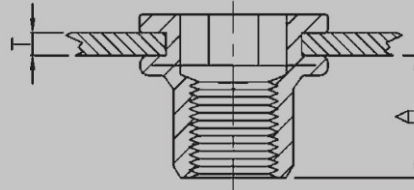
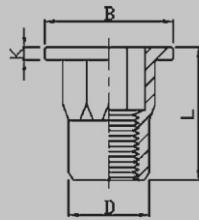
Gwint	Numer artykułu	Zakres Min - Max T [mm]	A Ref	Otwór montażowy + 0.1 / -0 [mm]	D [mm]	B [mm]	K [mm]	L [mm]
M4 x 0.7	RH-FHB-0425	0.5-2.5	6.7	6.0	5.9	7.0	0.5	11.0
M4 x 0.7	RH-FHB-0450	2.5-5.0	6.7	6.0	5.9	7.0	0.5	13.5
M5 x 0.8	RH-FHB-0530	0.5-3.0	9.0	7.0	6.9	8.0	0.5	14.5
M5 x 0.8	RH-FHB-0550	3.0-5.0	9.0	7.0	6.9	8.0	0.5	16.0
M6 x 1.0	RH-FHB-0635	1.0-3.5	10.0	9.0	8.9	10.0	0.6	16.0
M6 x 1.0	RH-FHB-0660	3.5-6.0	10.0	9.0	8.9	10.0	0.6	18.0
M8 x 1.25	RH-FHB-0840	1.0-4.0	11.5	11.0	10.9	12.0	0.65	18.0
M8 x 1.25	RH-FHB-0860	4.0-6.0	11.5	11.0	10.9	12.0	0.65	20.0
M10 x 1.5	RH-FHB-1035	1.0-3.5	12.5	13.0	12.9	14.5	0.75	19.0
M10 x 1.5	RH-FHB-1060	3.5-6.0	14.5	13.0	12.9	14.5	0.75	23.5



RH-FHBC

KOŁNIERZ ZREDUKOWANY MINI, SZEŚCIOKĄTNA, SZCZELNA, STAL Zi

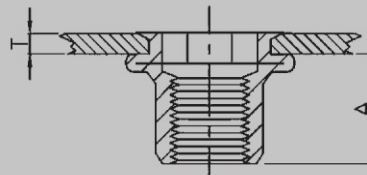
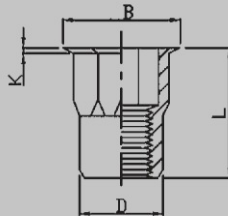
Gwint	Numer artykułu	Zakres Min - Max T [mm]	A Ref	Otwór montażowy + 0.1 / -0 [mm]	D [mm]	B [mm]	K [mm]	L [mm]
M4 x 0.7	RH-FHBC-0425	0.5-2.5	12.3	6.0	5.9	7.0	0.5	16.0
M5 x 0.8	RH-FHBC-0530	0.5-3.0	15.2	7.0	6.9	8.0	0.5	20.0
M6 x 1.0	RH-FHBC-0635	1.0-3.5	14.5	9.0	8.9	10.0	0.6	20.5
M8 x 1.25	RH-FHBC-0840	1.0-4.0	17.0	11.0	10.9	12.0	0.65	23.0
M10 x 1.5	RH-FHBC-1045	1.0-4.5	20.0	13.0	12.9	14.5	0.75	28.5



FH-SHB

KOŁNIERZ PŁASKI, SZEŚCIOKĄT NA POŁOWIE, STAL Zi

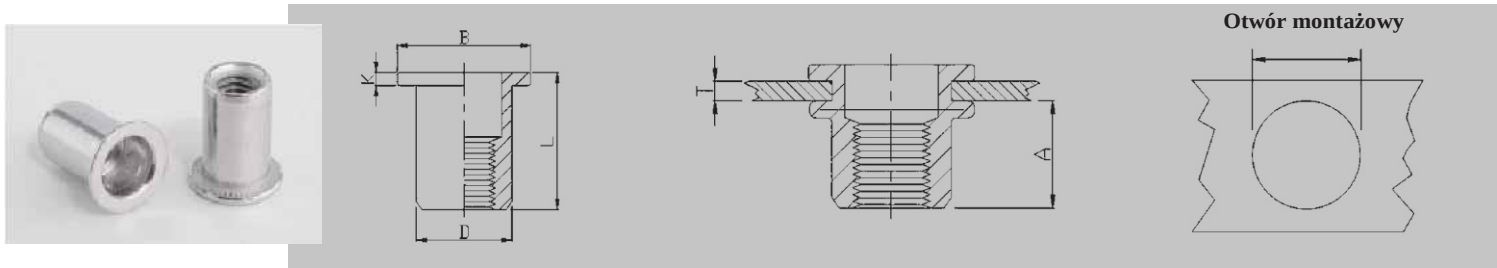
Gwint	Numer artykułu	Zakres Min - Max T mm	A Ref	Otwór montażowy	D [mm]	B [mm]	K [mm]	L [mm]
				+ 0.1/-0 [mm]				
M4 x 0.7	FH-SHB-0420	0.5-2.0	7.0	6.0	5.9	9.0	0.8	11.0
M5 x 0.8	FH-SHB-0525	0.5-2.5	7.5	7.0	6.9	10.0	1.0	12.0
M6 x 1.0	FH-SHB-0630	0.5-3.0	9.2	9.0	8.9	12.7	1.3	15.5
M8 x 1.25	FH-SHB-0835	1.0-3.5	11.2	11.0	10.9	16.0	1.5	18.0
M10 x 1.5	FH-SHB-1040	1.0-4.0	12.8	13.0	12.9	18.0	1.7	21.0



RH-SHB

KOŁNIERZ ZREDUKOWANY MINI, SZEŚCIOKĄT NA POŁOWIE, STAL Zi,

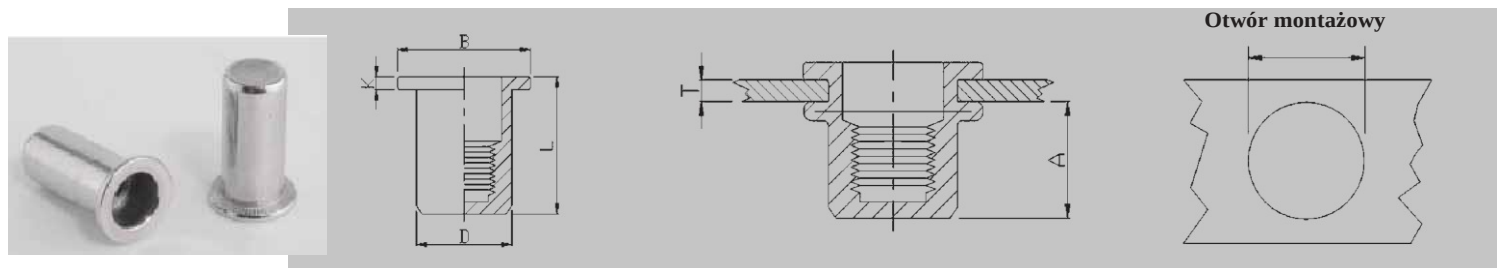
Gwint	Numer artykułu	Zakres Min - Max T [mm]	A Ref	Otwór montażowy	D [mm]	B [mm]	K [mm]	L [mm]
				+ 0.1/ - 0 [mm]				
M4 x 0.7	RH-SHB-0420	0.5-2.0	8.3	6.0	5.9	7.0	0.5	12.0
M5 x 0.8	RH-SHB-0525	0.5-2.5	8.7	7.0	6.9	8.0	0.5	13.0
M6 x 1.0	RH-SHB-0635	1.0-3.5	10.5	9.0	8.9	10.0	0.6	16.0
M8 x 1.25	RH-SHB-0840	1.0-4.0	11.3	11.0	10.9	12.7	0.6	17.5
M10 x 1.5	RH-SHB-1045	1.0-4.5	12.8	13.0	12.9	14.5	0.7	21.0



FH-RB/SS

KOŁNIERZ PŁASKI, STAL NIERDZEWNA A2

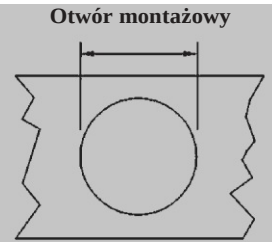
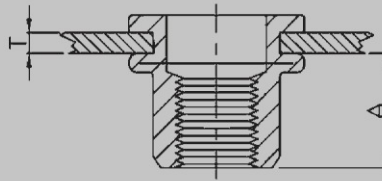
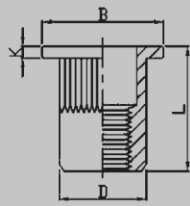
Gwint	Numer artykułu	Zakres Min - Max T [mm]	A Ref	Otwór montażowy + 0.1 / -0 [mm]	D [mm]	B [mm]	K [mm]	L [mm]
M4 x 0.7	FH-RB/SS-0420	0.5-2.0	6.0	6.0	5.9	8.5	0.8	10.5
M5 x 0.8	FH-RB/SS-0525	0.5-2.5	7.5	7.0	6.9	10.0	1.0	13.0
M6 x 1.0	FH-RB/SS-0630	0.5-3.0	9.2	9.0	8.9	12.3	1.3	15.5
M8 x 1.25	FH-RB/SS-0835	1.0-3.5	11.5	11.0	10.9	15.0	1.5	18.5
M10 x 1.5	FH-RB/SS-1040	1.0-4.0	12.5	13.0	12.9	17.0	1.6	21.0



FH-RBC/SS

KOŁNIERZ PŁASKI, SZCZELNA, STAL NIERDZEWNA A2

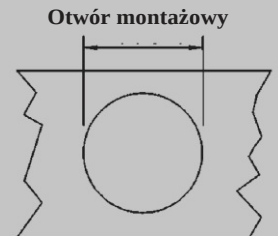
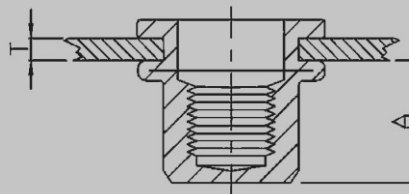
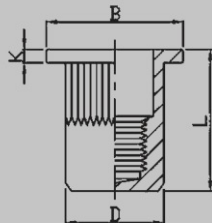
Gwint	Numer Artykułu	Zakres Min - Max T [mm]	A Ref	Otwór montażowy + 0.1 / 0 [mm]	D [mm]	B [mm]	K [mm]	L [mm]
M4 x 0.7	FH-RBC/SS-0420	0.5-2.0	11.3	6.0	5.9	9.0	0.8	16.0
M5 x 0.8	FH-RBC/SS-0525	0.5-2.5	13.8	7.0	6.9	10.0	1.0	19.0
M6 x 1.0	FH-RBC/SS-0630	0.5-3.0	15.0	9.0	8.9	12.3	1.3	21.0
M8 x 1.25	FH-RBC/SS-0835	1.0-3.5	18.2	11.0	10.9	15.5	1.5	25.0
M10 x 1.5	FH-RBC/SS-1040	1.0-4.0	19.4	13.0	12.9	17.0	1.6	27.0



FH-KB/SS

KOŁNIERZ PŁASKI, RADEŁKOWANA, STAL NIERDZEWNA A2

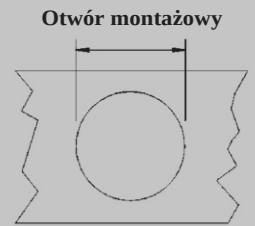
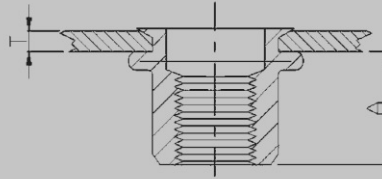
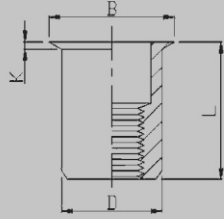
Gwint	Numer artykułu	Zakres Min - Max T [mm]	A Ref	Otwór montażowy		D [mm]	B [mm]	K [mm]	L [mm]
				+ 0.1 /-0 [mm]					
M4 x 0.7	FH-KB/SS-0420	0.5-2.0	6.5	6.0		5.9	9.0	0.8	10.5
M5 x 0.8	FH-KB/SS-0525	0.5-2.5	8.0	7.0		6.9	10.0	1.0	13.0
M6 x 1.0	FH-KB/SS-0630	0.5-3.0	9.2	9.0		8.9	12.3	1.3	15.5
M8 x 1.25	FH-KB/SS-0835	1.0-3.5	11.5	11.0		10.9	14.5	1.5	18.5
M10 x 1.5	FH-KB/SS-1040	1.0-4.0	13.5	13.0		12.9	17.0	1.6	21.0



FH-KBC/SS

KOŁNIERZ PŁASKI, RADEŁKOWANA, SZCZELNA, STAL NIERDZEWNA A2

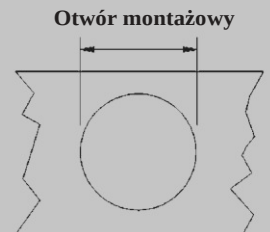
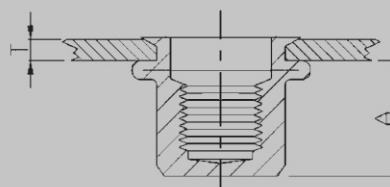
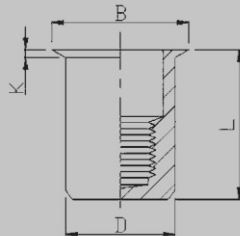
Gwint	Numer artykułu	Zakres Min - Max T [mm]	A Ref	Otwór montażowy		D [mm]	B [mm]	K [mm]	L [mm]
				+ 0.1 /-0 [mm]					
M4 x 0.7	FH-KBC/SS-0420	0.5-2.0	11.8	6.0		5.9	9.0	0.8	16.0
M5 x 0.8	FH-KBC/SS-0525	0.5-2.5	12.0	7.0		6.9	10.0	1.0	17.0
M6 x 1.0	FH-KBC/SS-0630	0.5-3.0	12.7	9.0		8.9	12.3	1.3	19.2
M8 x 1.25	FH-KBC/SS-0835	1.0-3.5	14.2	11.0		10.9	15.0	1.5	21.5
M10 x 1.5	FH-KBC/SS-1040	1.0-4.0	18.0	13.0		12.9	17.0	1.6	27.0



RH-RB/SS

KOŁNIERZ ZREDUKOWANY MINI, STAL NIERDZEWNA A2

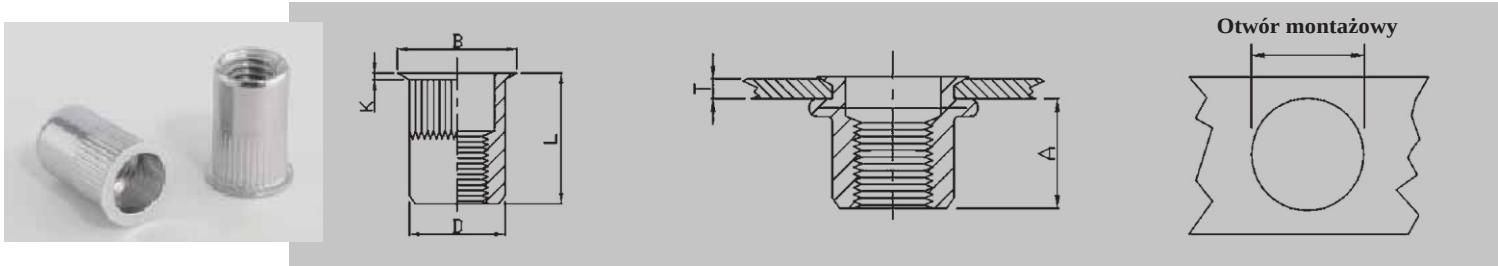
Gwint	Numer artykułu	Zakres Min - Max T [mm]	A Ref	Otwór montażowy + 0.1 /-0 [mm]	D [mm]	B [mm]	K [mm]	L [mm]
M4 x 0.7	RH-RB/SS-0420	0.5-2.0	6.5	6.0	5.9	7.0	0.5	10.5
M5 x 0.8	RH-RB/SS-0520	0.5-2.0	7.0	7.0	6.9	8.0	0.5	11.5
M6 x 1.0	RH-RB/SS-0625	0.5-2.5	8.5	9.0	8.9	10.0	0.6	14.0
M8 x 1.25	RH-RB/SS-0830	1.0-3.0	10.5	11.0	10.9	12.0	0.6	16.5
M10 x 1.5	RH-RB/SS-1030	1.0-3.5	11.5	13.0	12.9	14.0	0.7	17.7



RH-RBC/SS

KOŁNIERZ ZREDUKOWANY MINI, SZCZELNA, STAL NIERDZEWNA A2

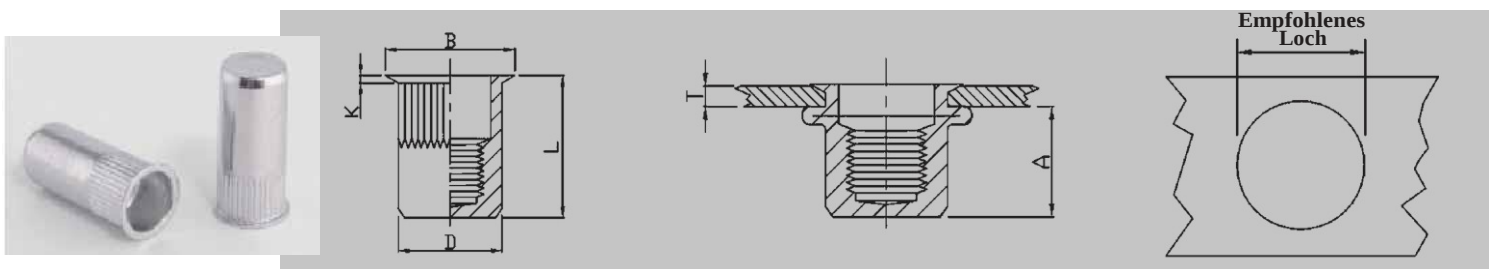
Gwint	Numer artykułu	Zakres Min - Max T [mm]	A Ref	Otwór montażowy + 0.1 /-0 [mm]	D [mm]	B [mm]	K [mm]	L [mm]
M4 x 0.7	RH-RBC/SS-0420	0.5-2.0	11.0	6.0	5.9	7.0	0.5	10.5
M5 x 0.8	RH-RBC/SS-0520	0.5-2.0	12.5	7.0	6.9	8.0	0.5	16.5
M6 x 1.0	RH-RBC/SS-0625	0.5-2.5	15.5	9.0	8.9	10.0	0.6	20.5
M8 x 1.25	RH-RBC/SS-0830	1.0-3.0	17.6	11.0	10.9	12.0	0.6	23.0
M10 x 1.5	RH-RBC/SS-1035	1.0-3.5	18.3	13.0	12.9	14.0	0.7	24.5



RH-KB/SS

KOŁNIERZ ZREDUKOWANY MINI, RADEŁKOWANA, STAL NIERDZEWNA A2

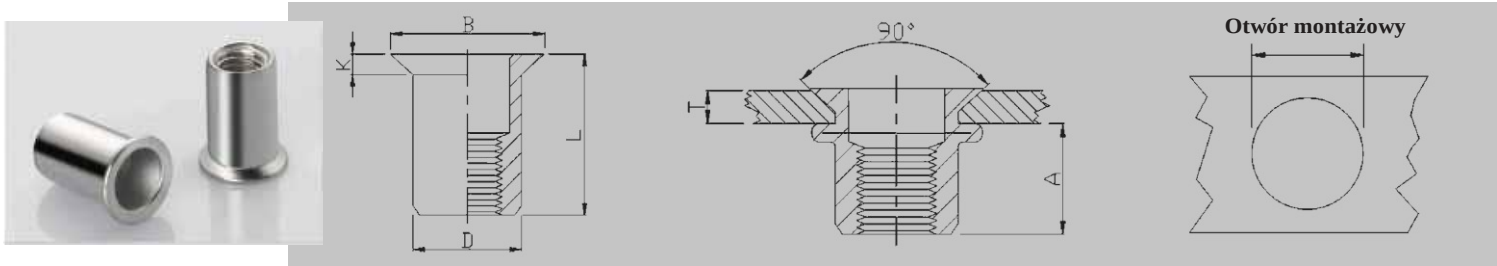
Gwint	Numer artykułu	Zakres Min - Max T [mm]	A Ref	Otwór montażowy + 0.1 /-0 [mm]	D [mm]	B [mm]	K [mm]	L [mm]
M4 x 0.7	RH-KB/SS-0420	0.5-2.0	6.5	6.0	5.9	7.0	0.5	10.5
M5 x 0.8	RH-KB/SS-0520	0.5-2.0	7.2	7.0	6.9	8.0	0.5	11.5
M6 x 1.0	RH-KB/SS-0625	0.5-2.5	8.7	9.0	8.9	10.0	0.6	14.0
M8 x 1.25	RH-KB/SS-0830	0.5-3.0	10.5	11.0	10.9	12.0	0.65	16.5
M10 x 1.5	RH-KB/SS-1035	1.0-3.5	10.7	13.0	12.9	14.0	0.7	17.7



RH-KBC/SS

KOŁNIERZ ZREDUKOWANY MINI, RADEŁKOWANA, SZCZELNA, STAL NIERDZEWNA A2

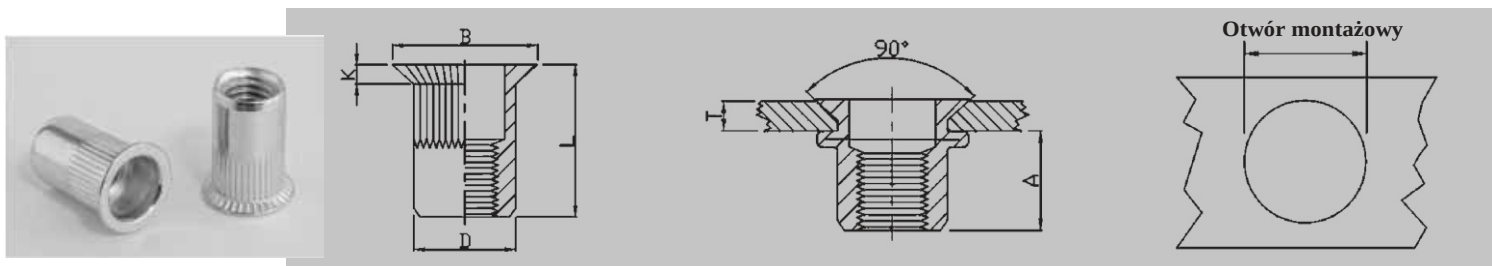
Gwint	Numer artykułu	Zakres Min - Max T [mm]	A Ref	Otwór montażowy + 0.1 /-0 [mm]	D [mm]	B [mm]	K [mm]	L [mm]
M4 x 0.7	RH-KBC/SS -0420	0.5-2.0	11.2	6.0	5.9	7.0	0.5	15.0
M5 x 0.8	RH-KBC/SS-0520	0.5-2.0	11.5	7.0	6.9	8.0	0.5	16.5
M6 x 1.0	RH-KBC/SS-0625	0.5-2.5	15.0	9.0	8.9	10.0	0.6	20.5
M8 x 1.25	RH-KBC/SS-0830	0.5-3.0	17.5	11.0	10.9	12.0	0.65	23.0
M10 x 1.5	RH-KBC/SS-1035	1.0-3.5	18.0	13.0	12.9	14.0	0.7	24.5



CH-RB/SS

KOŁNIERZ STOŻKOWY, STAL NIERDZEWNA A2

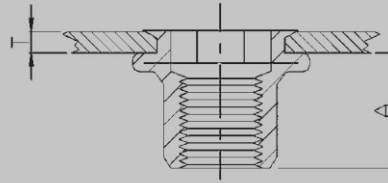
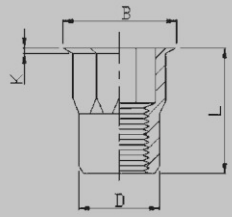
Gwint	Numer artykułu	Zakres Min - Max T [mm]	A Ref	Otwór montażowy + 0.1 /-0 [mm]	D [mm]	B [mm]	K [mm]	L [mm]
M4 x 0.7	CH-RB/SS-0430	1.5-3.0	7.5	6.0	5.9	9.0	1.5	12.0
M5 x 0.8	CH-RB/SS-0535	1.5-3.5	7.8	7.0	6.9	10.0	1.5	13.0
M6 x 1.0	CH-RB/SS-0640	1.5-4.0	9.0	9.0	8.9	12.0	1.5	15.5
M8 x 1.25	CH-RB/SS-0845	2.0-4.5	12.0	11.0	10.9	14.0	1.5	18.5
M10 x 1.5	CH-RB/SS-1050	2.0-5.0	13.0	13.0	12.9	16.0	1.5	21.0



CH-KB/SS

KOŁNIERZ STOŻKOWY, RADEŁKOWANA, STAL NIERDZEWNA A2

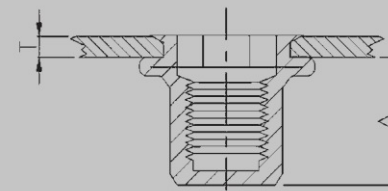
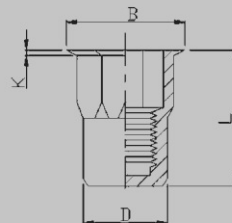
Gwint	Numer artykułu	Zakres Min - Max T [mm]	A Ref	Otwór montażowy + 0.1 /-0 [mm]	D [mm]	B [mm]	K [mm]	L [mm]
M4 x 0.7	CH-KB/SS-0430	1.5-3.0	7.5	6.0	5.9	9.0	1.5	12.0
M5 x 0.8	CH-KB/SS-0535	1.5-3.5	7.8	7.0	6.9	10.0	1.5	13.0
M6 x 1.0	CH-KB/SS-0640	1.5-4.0	9.0	9.0	8.9	12.0	1.5	15.5
M8 x 1.25	CH-KB/SS-0845	2.0-4.5	12.0	11.0	10.9	14.0	1.5	18.5
M10 x 1.5	CH-KB/SS-1050	2.0-5.0	13.0	13.0	12.9	16.0	1.5	21.0



RH-SHB/SS

KOŁNIERZ ZREDUKOWANY MINI, SZEŚCIOKĄT NA POŁOWIE, STAL NIERDZEWNA A2

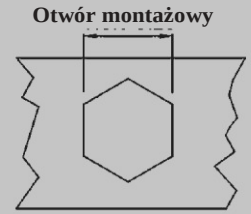
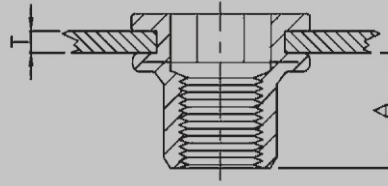
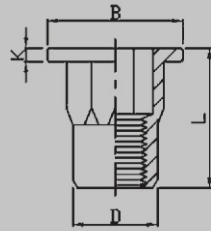
Gwint	Numer artykułu	Zakres Min - Max T [mm]	A Ref	Otwór montażowy + 0.1 /-0 [mm]	D [mm]	B [mm]	K [mm]	L [mm]
M4 x 0.7	RH-SHB/SS-0420	0.5-2.0	8.0	6.0	5.9	7.0	0.5	12.0
M5 x 0.8	RH-SHB/SS-0525	0.5-2.5	8.2	7.0	6.9	8.0	0.5	13.0
M6 x 1.0	RH-SHB/SS-0630	0.5-3.0	10.7	9.0	8.9	10.0	0.6	16.0
M8 x 1.25	RH-SHB/SS-0835	1.0-3.5	11.2	11.0	10.9	12.0	0.65	17.5
M10 x 1.5	RH-SHB/SS-1040	1.0-4.0	13.5	13.0	12.9	14.5	0.75	21.0



RH-SHBC/SS

KOŁNIERZ ZREDUKOWANY MINI, SZEŚCIOKĄT NA POŁOWIE, SZCZELNA, STAL NIERDZEWNA A2

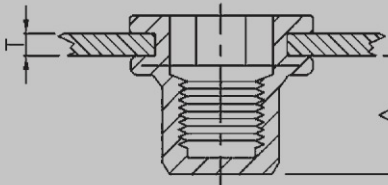
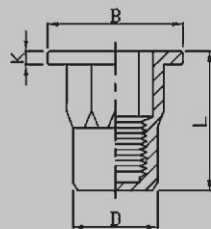
Gwint	Numer artykułu	Zakres Min - Max T [mm]	A Ref	Otwór montażowy + 0.1 /-0 [mm]	D [mm]	B [mm]	K [mm]	L [mm]
M4 x 0.7	RH-SHBC/SS-0420	0.5-2.0	11.5	6.0	5.9	7.0	0.5	15.5
M5 x 0.8	RH-SHBC/SS-0525	0.5-2.5	13.5	7.0	6.9	8.0	0.5	18.0
M6 x 1.0	RH-SHBC/SS-0630	0.5-3.0	15.8	9.0	8.9	10.0	0.6	21.5
M8 x 1.25	RH-SHBC/SS-0835	1.0-3.5	18.2	11.0	10.9	12.0	0.65	24.0
M10 x 1.5	RH-SHBC/SS-1040	1.0-4.0	23.2	13.0	12.9	14.5	0.75	30.5



FH-SHB/SS

KOŁNIERZ PŁASKI, SZEŚCIOKĄT NA POŁOWIE, STAL NIERDZEWNA A2

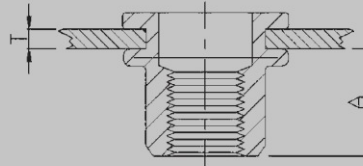
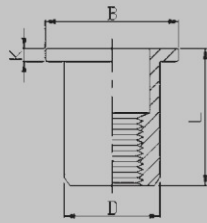
Gwint	Numer artykułu	Zakres Min - Max T [mm]	A Ref	Otwór montażowy + 0.1 /-0 [mm]	D [mm]	B [mm]	K [mm]	L [mm]
M4 x 0.7	FH-SHB/SS-0420	0.5-2.0	7.2	6.0	5.9	9.0	0.8	11.0
M5 x 0.8	FH-SHB/SS-0525	0.5-2.5	7.5	7.0	6.9	10.0	1.0	12.0
M6 x 1.0	FH-SHB/SS-0630	0.5-3.0	9.2	9.0	8.9	12.7	1.3	15.5
M8 x 1.25	FH-SHB/SS-0835	1.0-3.5	11.0	11.0	10.9	16.0	1.5	18.0
M10 x 1.5	FH-SHB/SS-1040	1.0-4.0	13.2	13.0	12.9	18.0	1.7	21.0



FH-SHBC/SS

KOŁNIERZ PŁASKI, SZEŚCIOKĄT NA POŁOWIE, SZCZELNA, STAL NIERDZEWNA A2

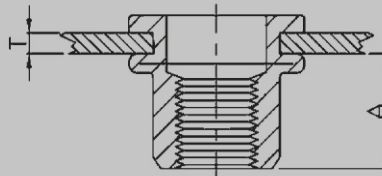
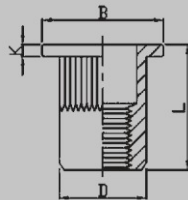
Gwint	Numer artykułu	Zakres Min - Max T [mm]	A Ref	Otwór montażowy + 0.1 /-0 [mm]	D [mm]	B [mm]	K [mm]	L [mm]
M4 x 0.7	FH-SHBC/SS-0420	0.5-2.0	11.5	6.0	5.9	9.0	1.0	16.0
M5 x 0.8	FH-SHBC/SS-0525	0.5-2.5	13.5	7.0	6.9	10.0	1.0	18.5
M6 x 1.0	FH-SHBC/SS-0630	0.5-3.0	17.0	9.0	8.9	12.7	1.5	23.0
M8 x 1.25	FH-SHBC/SS-0835	1.0-3.5	18.2	11.0	10.9	16.0	1.5	25.0
M10 x 1.5	FH-SHBC/SS-1040	1.0-4.0	25.0	13.0	12.9	19.0	1.7	33.0



FH-RB/AL

KOŁNIERZ PŁASKI, ALUMINIUM

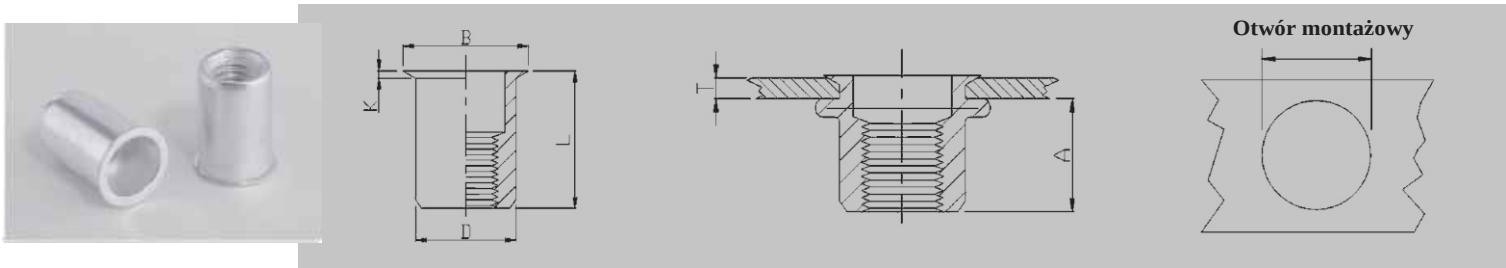
Gwint	Numer artykułu	Zakres Min - Max T [mm]	A Ref	Otwór montażowy + 0.1 /-0 [mm]	D [mm]	B [mm]	K [mm]	L [mm]
M4 x 0.7	FH-RB/AL-0420	0.5-2.0	6.0	6.0	5.9	8.8	0.8	10.5
M5 x 0.8	FH-RB/AL-0525	0.5-2.5	7.5	7.0	6.9	10.0	1.0	13.0
M6 x 1.0	FH-RB/AL-0625	0.5-2.5	9.2	9.0	8.9	12.3	1.5	15.0
M8 x 1.25	FH-RB/AL-0830	1.0-3.0	11.2	11.0	10.9	14.3	1.5	16.5
M10 x 1.5	FH-RB/AL-1040	1.0-4.0	11.5	13.0	12.9	16.3	1.6	19.0



FH-KB/AL

KOŁNIERZ PŁASKI, RADEŁKOWANA, ALUMINIUM

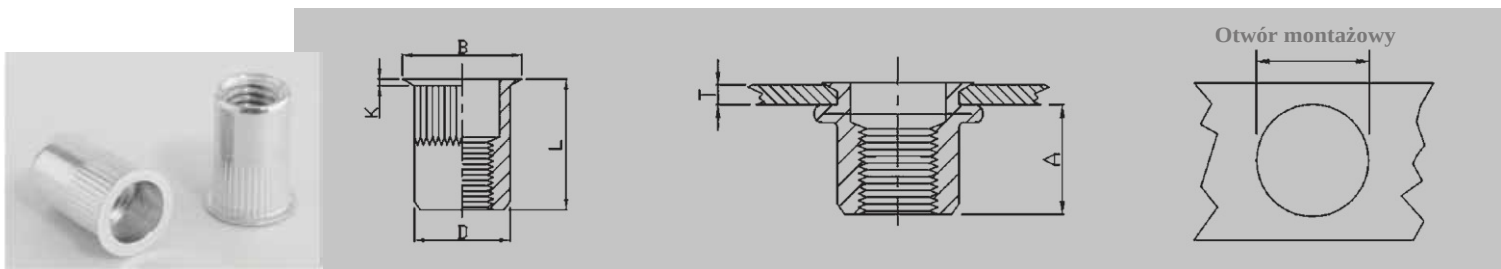
Gwint	Numer artykułu	Zakres Min - Max T [mm]	A Ref	Otwór montażowy + 0.1 /-0 [mm]	D [mm]	B [mm]	K [mm]	L [mm]
M4 x 0.7	FH-KB/AL-0420	0.5-2.0	6.0	6.0	5.9	8.8	0.8	10.5
M5 x 0.8	FH-KB/AL-0525	0.5-2.5	7.5	7.0	6.9	10.0	1.0	13.0
M6 x 1.0	FH-KB/AL-0625	0.5-2.5	9.2	9.0	8.9	12.3	1.5	15.0
M8 x 1.25	FH-KB/AL-0830	1.0-3.0	10.2	11.0	10.9	14.3	1.5	16.5
M10 x 1.5	FH-KB/AL-1040	1.0-4.0	11.5	13.0	12.9	16.3	1.6	19.0



RH-RB/AL

KOŁNIERZ ZREDUKOWANY MINI, ALUMINIUM

Gwint	Numer artykułu	Zakres Min - Max T [mm]	A Ref	Otwór montażowy + 0.1 /-0 [mm]	D [mm]	B [mm]	K [mm]	L [mm]
M4 x 0.7	RH-RB/AL-0420	0.5-2.0	6.0	6.0	5.9	7.0	0.5	10.5
M5 x 0.8	RH-RB/AL-0520	0.5-2.0	7.5	7.0	6.9	8.0	0.5	11.5
M6 x 1.0	RH-RB/AL-0625	0.5-2.5	9.2	9.0	8.9	10.0	0.6	14.0
M8 x 1.25	RH-RB/AL-0825	0.5-2.5	10.2	11.0	10.9	12.0	0.65	15.5
M10 x 1.5	RH-RB/AL-1030	1.0-3.0	11.5	13.0	12.9	14.1	0.7	17.7



RH-KB/AL

KOŁNIERZ ZREDUKOWANY MINI, RADEŁKOWANA, ALUMINIUM

Gwint	Numer artykułu	Zakres Min - Max T [mm]	A Ref	Otwór montażowy + 0.1 /-0 [mm]	D [mm]	B [mm]	K [mm]	L [mm]
M4 x 0.7	RH-KB/AL-0420	0.5-2.0	6.0	6.0	5.9	7.0	0.5	10.5
M5 x 0.8	RH-KB/AL-0520	0.5-2.0	7.5	7.0	6.9	8.0	0.5	11.5
M6 x 1.0	RH-KB/AL-0625	0.5-2.5	9.2	9.0	8.9	10.0	0.6	14.0
M8 x 1.25	RH-KB/AL-0830	0.5-2.5	10.2	11.0	10.9	12.0	0.65	15.5
M10 x 1.5	RH-KB/AL-1030	1.0-3.0	11.5	13.0	12.9	14.1	0.7	17.7