

TechFast

Technical Fastening Solutions



WKŁADKI DO RUR INSERTS FOR TUBES GEWINDE EINSÄTZE FÜR ROHRE



TechFast

Technical Fastening Solutions



Unterdorfstrasse 3
86637 Villenbach
Email: info@techfast.de

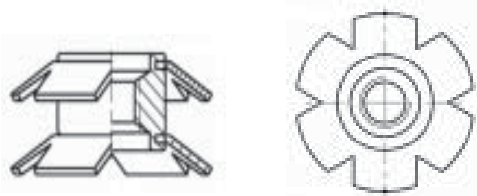
TechFast

Technical Fastening Solutions



Tracka 7c
10-364 Olsztyn
Email: info@techfast.pl

WKŁADKI DO RUR OKRĄGLYCH STAL / STAL
INSERTS FOR ROUND TUBE STEEL / STEEL
EINSÄTZE FÜR RUNDES ROHR STAHL / STAHL

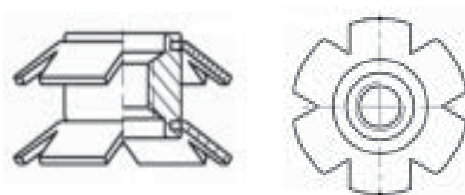


BEZ GŁÓWKI / WITHOUT HEAD / OHNE KOPF

Ø Tube internal range mm Ø Zakres wewnętrzny rury mm Ø Rohrrinnenbereich mm	Size Rozmiar Gewinde	P/N
11.8-12.2	M6	TF-OBST-M6-11.8
12.6-13.2	M6	TF-OBST-M6-12.6
13.2-13.8	M6	TF-OBST-M6-13.2
13.8-14.2	M6	TF-OBST-M6-13.8
14.8-16.1	M6	TF-OBST-M6-14.8
	M8	TF-OBST-M8-14.8
15.7-17.1	M6	TF-OBST-M6-15.7
	M8	TF-OBST-M8-15,7
16.4-17.7	M6	TF-OBST-M6-16.4
	M8	TF-OBST-M8-16.4
17.9-19.3	M6	TF-OBST-M6-17.9
	M8	TF-OBST-M8-17.9
	M10	TF-OBST-M10-17.9
18.9-20.2	M6	TF-OBST-M6-18.9
	M8	TF-OBST-M8-18.9
	M10	TF-OBST-M10-18.9
19.5-20.9	M6	TF-OBST-M6-19.5
	M8	TF-OBST-M8-19.5
	M10	TF-OBST-M10-19.5
21.4-22.4	M6	TF-OBST-M6-21.4
	M8	TF-OBST-M8-21.4
	M10	TF-OBST-M10-21.4
19.2-21.4	M6	TF-OBST-M6-19.2
	M8	TF-OBST-M8-19.2
	M10	TF-OBST-M10-19.2
22.1-23.4	M6	TF-OBST-M6-22.1
	M8	TF-OBST-M8-22.1
	M10	TF-OBST-M10-22.1
22.7-24.0	M6	TF-OBST-M6-22.7
	M8	TF-OBST-M8-22.7
	M10	TF-OBST-M10-22.7
24.6-25.6	M6	TF-OBST-M6-24.6
	M8	TF-OBST-M8-24.6
	M10	TF-OBST-M10-24.6
25.3-26.6	M6	TF-OBST-M6-25.3
	M8	TF-OBST-M8-25.3
	M10	TF-OBST-M10-25.3
26.0-28.0	M6	TF-OBST-M6-26.0
	M8	TF-OBST-M8-26.0
	M10	TF-OBST-M10-26.0

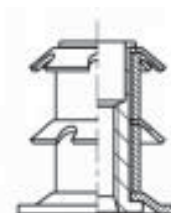
WKŁADKI DO RUR OKRĄGLYCH STAL / STAL
INSERTS FOR ROUND TUBE STEEL / STEEL
EINSÄTZE FÜR RUNDES ROHR STAHL / STAHL

BEZ GŁÓWKI / WITHOUT HEAD / OHNE KOPF



Ø Tube internal range mm Ø Zakres wewnętrzny rury mm Ø Rohrrinnenbereich mm	Size Rozmiar Gewinde	P/N
28.4-29.8	M6	TF-OBST-M6-28.4
	M8	TF-OBST-M8-28.4
	M10	TF-OBST-M10-28.4
29.8-30.8	M6	TF-OBST-M6-29.8
	M8	TF-OBST-M8-29.8
31.7-32.9	M6	TF-OBST-M6-31,7
	M8	TF-OBST-M8-31,7
	M10	TF-OBST-M10-31,7
32.7-33.9	M6	TF-OBST-M6-32.7
	M8	TF-OBST-M8-32.7
	M10	TF-OBST-M10-32.7
33.7-35.0	M6	TF-OBST-M6-33.7
	M8	TF-OBST-M8-33,7
	M10	TF-OBST-M10-33.7
34.8-36.1	M6	TF-OBST-M6-34.8
	M8	TF-OBST-M8-34.8
	M10	TF-OBST-M10-34.8
36.0-38.0	M6	TF-OBST-M6-36.0
	M8	TF-OBST-M8-36.0
	M10	TF-OBST-M10-36.0
37.3-39.3	M6	TF-OBST-M6-37.3
	M8	TF-OBST-M8-37.3
	M10	TF-OBST-M10-37.3
38.4-40.4	M6	TF-OBST-M6-38.4
	M8	TF-OBST-M8-38.4
	M10	TF-OBST-M10-38.4
41.4-42.4	M6	TF-OBST-M6-41.4
	M8	TF-OBST-M8-41.4
	M10	TF-OBST-M10-41.4
42.2-44.2	M6	TF-OBST-M6-42.4
	M8	TF-OBST-M8-42.4
	M10	TF-OBST-M10-42.4
44.6-46.8	M6	TF-OBST-M6-44.6
	M8	TF-OBST-M8-44.6
	M10	TF-OBST-M10-44.6
47.5-48.8	M6	TF-OBST-M6-47.5
	M8	TF-OBST-M8-47.5
	M10	TF-OBST-M10-47.5

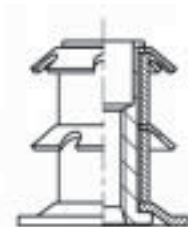
WKŁADKI DO RUR OKRĄGLYCH **STAL / STAL**
INSERTS FOR ROUND TUBE **STEEL / STEEL**
EINSÄTZE FÜR RUNDES ROHR **STAHL / STAHL**



Z GŁÓWKĄ / WITH HEAD / MIT KOPF

Ø Tube internal range mm Ø Zakres wewnętrzny rur mm Ø Rohrrinnenbereich mm	Size Rozmiar Gewinde	P/N	Head Główka Kopf (in mm)
14.8-16.1	M8	TF-OGST-M8-14.8	19
15.7-17.1	M8	TF-OGST-M8-15.7	19
16.4-17.7	M8	TF-OGST-M8-16.4	19
17.9-19.3	M8	TF-OGST-M8-17.9	22.2
	M10	TF-OGST-M10-17.9	
18.9-20.2	M8	TF-OGST-M8-18.9	22.2
	M10	TF-OGST-M10-18.9	
19.2-21.4	M8	TF-OGST-M8-19.2	25.4
	M10	TF-OGST-M10-19.2	
21.4-22.4	M8	TF-OGST-M8-21.4	25.4
	M10	TF-OGST-M10-21.4	
22.1-23.4	M8	TF-OGST-M8-22.1	25.4
	M10	TF-OGST-M10-22.1	
22.7-24.0	M8	TF-OGST-M8-22.7	25.4
	M10	TF-OGST-M10-22.7	
24.6-25.6	M8	TF-OGST-M8-24.6	28.5
	M10	TF-OGST-M10-24.6	
25.3-26.6	M8	TF-OGST-M8-25.3	28.5
	M10	TF-OGST-M10-25.3	
26.6-27.6	M8	TF-OGST-M8-26.6	28.5
	M10	TF-OGST-M10-26.6	
26.0-28.0	M8	TF-OGST-M8-26.0	30
	M10	TF-OGST-M10-26.0	
28.4-29.8	M8	TF-OGST-M8-28.4	31.8
	M10	TF-OGST-M10-28.4	
29.8-30.8	M8	TF-OGST-M8-29.8	31.8
	M10	TF-OGST-M10-29.8	
31.7-32.9	M8	TF-OGST-M8-31.7	35
	M10	TF-OGST-M10-31.7	
32.7-33.9	M8	TF-OGST-M8-32.7	38
	M10	TF-OGST-M10-32.7	

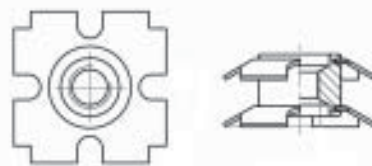
WKŁADKI DO RUR OKRĄGLYCH **STAL / STAL**
 INSERTS FOR ROUND TUBE **STEEL / STEEL**
 EINSÄTZE FÜR RUNDES ROHR **STAHL / STAHL**



Z GŁÓWKĄ / WITH HEAD / MIT KOPF

Ø Tube internal range mm Ø Zakres wewnętrzny rur mm Ø Rohrrinnenbereich mm	Size Rozmiar Gewinde	P/N	Head Główka Kopf (in mm)
33.7-35.0	M8	TF-OGST-M8-33.7	38
	M10	TF-OGST-M10-33.7	
34.8-36.1	M8	TF-OGST-M8-34.8	38
	M10	TF-OGST-M10-34.8	
36.0-38.0	M8	TF-OGST-M8-36.0	40
	M10	TF-OGST-M10-36.0	
37.3-39.3	M8	TF-OGST-M8-37.3	41.3
	M10	TF-OGST-M10-37.3	
38.4-40.4	M8	TF-OGST-M8-38.4	44.5
	M10	TF-OGST-M10-38.4	
41.4-42.4	M8	TF-OGST-M8-41.1	44.5
	M10	TF-OGST-M10-41.4	
43.7-45.7	M8	TF-OGST-M8-43.7	47.6
	M10	TF-OGST-M10-43.7	
42.2-44.2	M8	TF-OGST-M8-42.2	50.8
	M10	TF-OGST-M10-42.2	
43.7-45.7	M8	TF-OGST2-M8-43.7	50.8
	M10	TF-OGST2-M10-43.7	
44.6-46.8	M8	TF-OGST-M8-44.6	50.8
	M10	TF-OGST-M10-44.6	
46.8-47.8	M8	TF-OGST-M8-46.8	50.8
	M10	TF-OGST-M10-46.8	
47.5-48.8	M8	TF-OGST-M8-47.5	50.8
	M10	TF-OGST-M10-47.5	
53.0-55.0	M8	TF-OGST-M8-53.0	57.1
	M10	TF-OGST-M10-53.0	
56.0-58.0	M8	TF-OGST-M8-56.0	60
	M10	TF-OGST-M10-56.0	
59.5-61.5	M8	TF-OGST-M8-59.5	63.5
	M10	TF-OGST-M10-59.5	

WKŁADKI DO RUR KWADRATOWYCH **STAL / STAL**
INSERTS FOR SQUARE TUBE **STEEL / STEEL**
EINSÄTZE FÜR QUADRATISCHES ROHR **STAHL / STAHL**

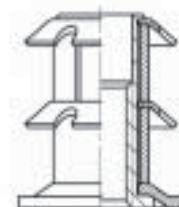


BEZ GŁÓWKI / WITHOUT HEAD / OHNE KOPF

Ø Tube internal range mm Ø Zakres wewnętrzny rury mm Ø Rohrrinnenbereich mm	Size Rozmiar Gewinde	P/N
15.7-17.1	M6	TF-KBST-M6-15.7
	M8	TF-KBST-M8-15.7
16.7-18.1	M6	TF-KBST-M6-16.7
	M8	TF-KBST-M8-16.7
18.9-20.2	M6	TF-KBST-M6-18.9
	M8	TF-KBST-M8-18.9
22.1-23.4	M6	TF-KBST-M6-22.1
	M8	TF-KBST-M8-22.1
26.0-28.0	M6	TF-KBST-M6-26.0
	M8	TF-KBST-M8-26.0
28.4-29.8	M6	TF-KBST-M6-28.4
	M8	TF-KBST-M8-28.4
34.8-36.1	M6	TF-KBST-M6-34.8
	M8	TF-KBST-M8-34.8
47.5-48.8	M6	TF-KBST-M6-47.5
	M8	TF-KBST-M8-47.5
	M10	TF-KBST-M10-47.5

WKŁADKI DO RUR KWADRATOWYCH **STAL / STAL**
INSERTS FOR SQUARE TUBE **STEEL / STEEL**
EINSÄTZE FÜR QUADRATISCHES ROHR **STAHL / STAHL**

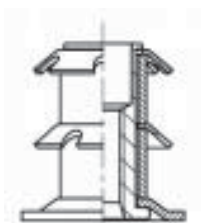
Z GŁÓWKĄ / WITH HEAD / MIT KOPF



Ø Tube internal range mm Ø Zakres wewnętrzny rur mm Ø Rohrrinnenbereich mm	Size Rozmiar Gewinde	P/N	Head Główka Kopf (in mm)
15.7-17.1	M8	TF-KGST-M8-15.7	19x19
	M10	TF-KGST-M10-15.7	
18.9-20.2	M8	TF-KGST-M8-18.9	22x22
	M10	TF-KGST-M10-18.9	
22.1-23.4	M8	TF-KGST-M8-22.1	25x25
	M10	TF-KGST-M10-22.1	
25.3-26.6	M8	TF-KGST-M8-25.3	28x28
	M10	TF-KGST-M10-25.3	
26.4-27.8	M8	TF-KGST-M8-26.4	30x30
	M10	TF-KGST-M10-26.4	
28.4-29.8	M8	TF-KGST-M8-28.4	32x32
	M10	TF-KGST-M10-28.4	
34.8-36.1	M8	TF-KGST-M8-34.8	38x38
	M10	TF-KGST-M10-34.8	
36.0-38.0	M8	TF-KGST-M8-36.0	40x40
	M10	TF-KGST-M10-36.0	
41.4-42.4	M8	TF-KGST-M8-41.4	45x45
	M10	TF-KGST-M10-41.4	
47.5-48.8	M8	TF-KGST-M8-47.5	50x50
	M10	TF-KGST-M10-48.8	

**WKŁADKI DO RUR OKRĄGLYCH Z GNIAZDEM NA TRZPIEŃ
INSERTS FOR ROUND TUBE WITH SOCKET FOR STEAM
EINSÄTZE FÜR RUNDES ROHR MIT STECKDOSE FÜR STEAM**

**STAL / STAL
STEEL / STEEL
STAHL / STAHL**



\varnothing Tube internal range mm \varnothing Zakres wewnętrzny rury mm \varnothing Rohrrinnenbereich mm	\varnothing Hole \varnothing Otwór \varnothing Loch	P/N	Head Główka Kopf (in mm)
22.1-23.4	11 mm	TF-OGGST-11-22.1	25.4
25.3-26.6	12 mm	TF-OGGST-12-25.3	28.6
28.4-29.8	13 mm	TF-OGGST-13-28.4	31.7